
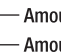




#0 DIPSY DIVER® DEPTH CHART

The amount of line needed to reach a desired depth is shown under each base plate setting.


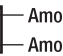
-  Amount of line needed without "0" ring
-  Amount of line needed with "0" ring

DESIRED DEPTH	SIZE 0 78g	BASE PLATE SETTING							
		0	1	2	3				
		AMOUNT OF "LINE OUT", IN FEET, TO REACH DESIRED TROLLING DEPTH							
10'		21	18	24	21	33	27	43	34
15'		35	30	44	38	54	45	69	55
20'		54	47	69	60	84	70	107	85
25'		81	70	97	84	120	100	148	118
30'		115	100	138	120	168	140	196	157
35'		167	145	196	170	234	195	275	220
40'		276	240						

Note: there is not a depth chart available for the Dipsy Diver 3/0 (78g) size.

#1 DIPSY DIVER® DEPTH CHART

The amount of line needed to reach a desired depth is shown under each base plate setting.

-  Amount of line needed without "0" ring
-  Amount of line needed with "0" ring

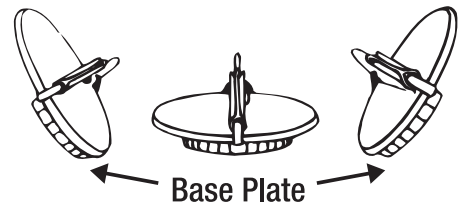
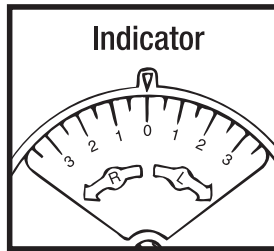
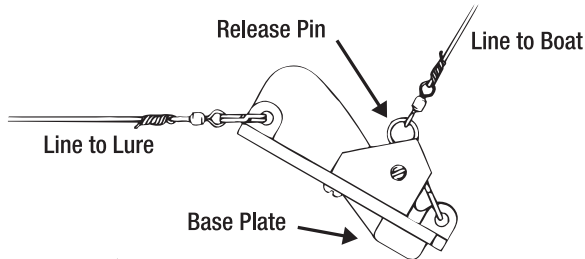
DESIRED DEPTH	SIZE 1 146g	BASE PLATE SETTING							
		0	1	2	3				
		AMOUNT OF "LINE OUT", IN FEET, TO REACH DESIRED TROLLING DEPTH.							
10'		16	14	20	17	24	20	30	24
15'		21	18	25	22	30	25	35	28
20'		31	27	35	30	41	34	50	40
25'		39	34	46	40	55	46	67	53
30'		50	43	58	50	69	57	84	67
35'		63	55	73	63	88	73	106	85
40'		74	64	88	76	105	87	129	103
45'		89	77	104	90	144	102	150	120
50'		106	92	123	107	147	122	178	142
60'		138	120	168	140				
70'		175	150						

#3 MAGNUM DIPSY DIVER® DEPTH CHART

The amount of line needed to reach a desired depth is shown under each base plate setting using 20# monofilament line. Depths achieved are without using "0" ring.

DESIRED DEPTH	SIZE 3 258g	BASE PLATE SETTING			
		0	1	2	3
		AMOUNT OF "LINE OUT", IN FEET, TO REACH DESIRED TROLLING DEPTH			
20'		25	27	30	32
30'		40	48	55	60
40'		56	68	80	85
50'		80	88	95	110
60'		100	110	120	140
80'		140	155	175	195
100'		180	195	220	250

Depth chart readings are based on troll speed of 2.5 to 3.0 MPH using 20-lb. mono. Trolling depth achieved will increase or decrease by 10% for each one MPH faster or slower. Line diameter and lure or attractor drag can also affect depth reached. The *Dipsy Diver* will reach greater depths when used with wire line or line that has a smaller diameter, such as any super braid, etc.




Simply snap a Dipsy Diver "0" Ring onto its matching size Dipsy Diver to increase the surface space, providing faster diving depths and allowing the Dipsy Diver to be trolled closer to the boat.



www.luhrjensen.com

© 2012 Rapala VMC Corporation